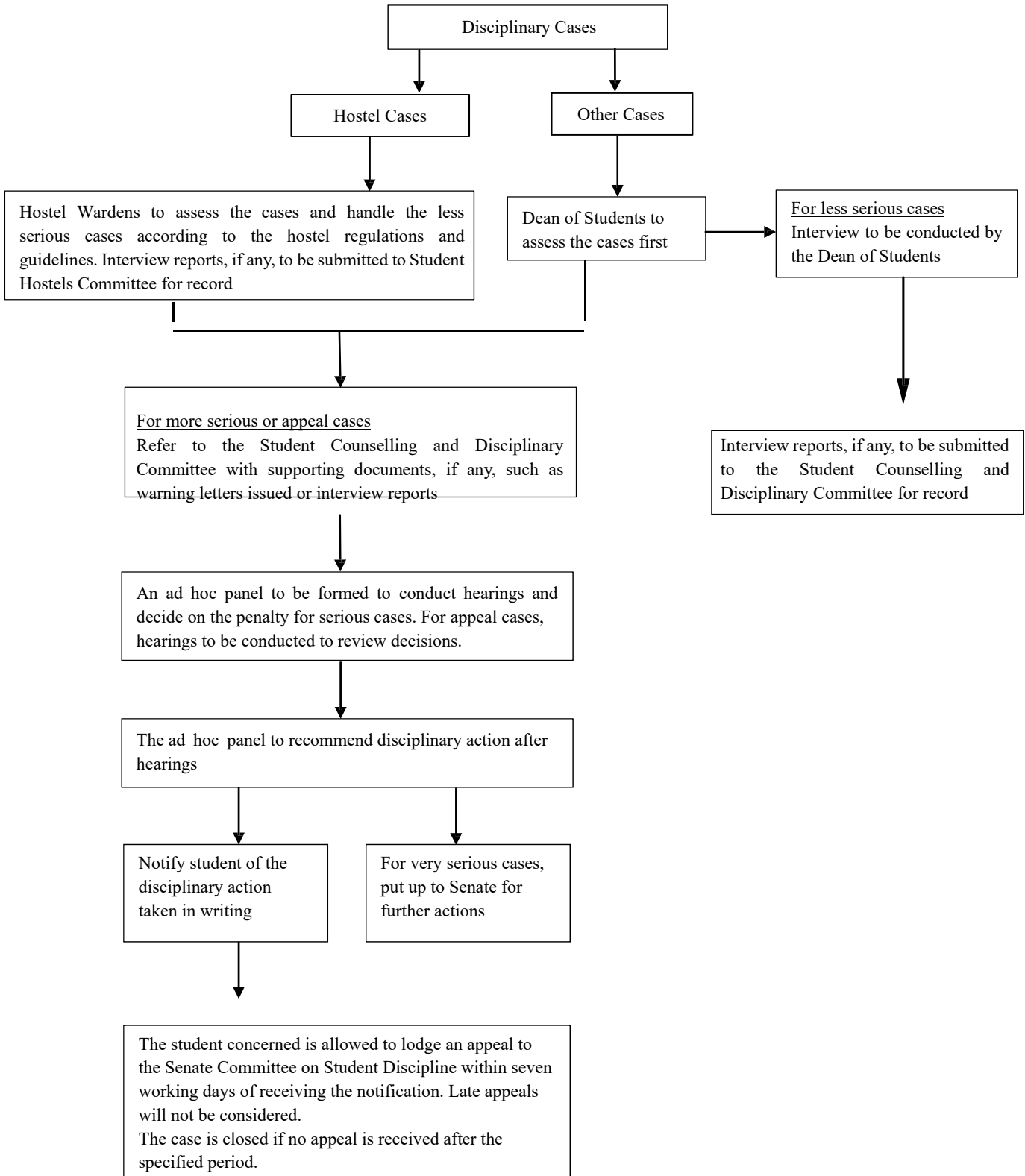


WU YEE SUN COLLEGE
THE CHINESE UNIVERSITY OF HONG KONG

Student Counselling and Disciplinary Committee

Handling of Student Disciplinary Cases

Flow Chart : Procedures on Handling of Student Disciplinary Cases



WU YEE SUN COLLEGE
THE CHINESE UNIVERSITY OF HONG KONG

Student Counselling and Disciplinary Committee

Student Disciplinary Cases Handled by the Committee

The Student Counselling and Disciplinary Committee is appointed by the Assembly of Fellows to handle misconduct cases of Wu Yee Sun College students. The Committee designates ad hoc panels to hear cases of misconduct or infringement of University or College regulations and determine appropriate disciplinary actions.

1. Ad Hoc Panel

When a misconduct case is referred to the Student Counselling and Disciplinary Committee, an ad hoc panel consisting of the following members may be convened to hear the case.

- The Chairperson or another member of the Committee as Chairperson of the Panel
- Two members of the Committee
- One student representative of the Committee
- Secretary of the Committee

2. Procedures

The subject student shall be informed of the charges and the time of the hearing at least seven days in advance. All disciplinary proceedings shall be conducted in confidence. The Panel shall recommend on the disciplinary actions after the hearing. The subject student will be informed of the disciplinary actions in writing.

3. Appeal

The subject student may appeal against the penalty imposed. Such appeal should be lodged in writing with full justifications to the Senate Committee on Student Discipline, within seven working days after the student has received the notification. The appeal shall be handled in accordance with the “Procedures for Handling Student Disciplinary Cases” of the Senate Committee on Student Discipline. Late appeals shall not be considered.